



Hydraulic Loading Arm 910115

INNOVATIVE DESIGNS FROM RACINE RAILROAD PRODUCTS

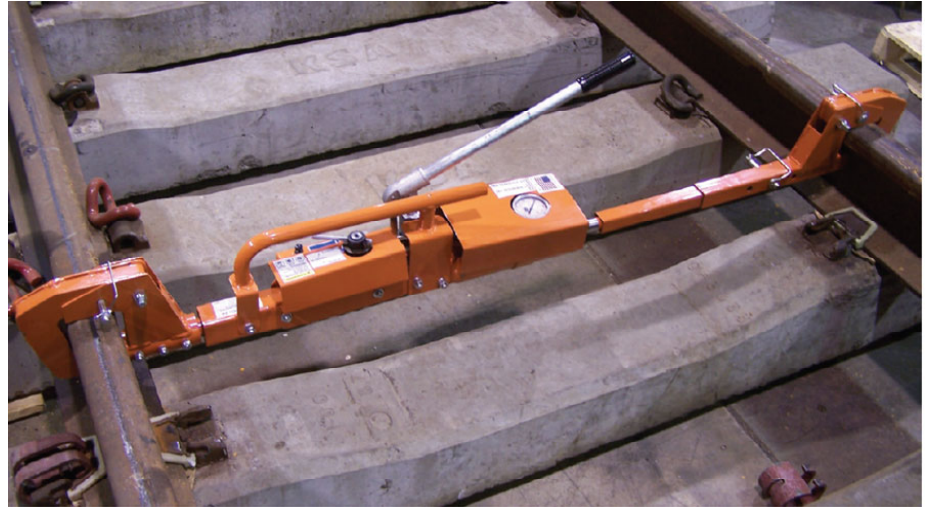
Powerful and Lightweight

The Hydraulic Load Arm is used to check the spacing between the balls of the two rails.

It is also used to pull the rail back to the proper specifications, holding the rail while the tie plate can be refastened to the tie.

Accurate Calibration

- A geometric rail care asserts approximately 4,000 lbs of pressure on the rail.
- Proper pressure to use on the Loading Arm is 800 lbs.

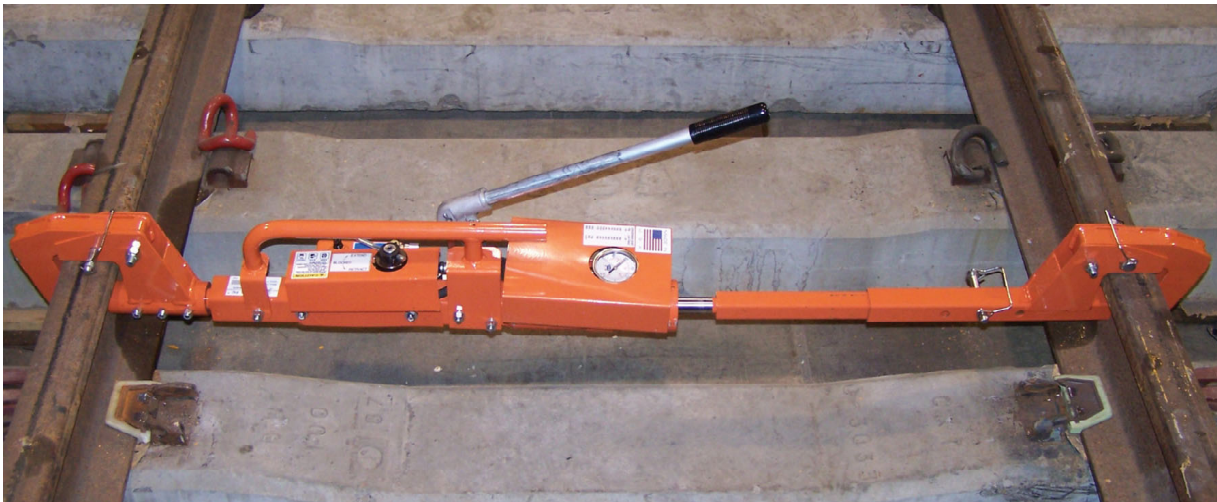


Rail Measurements

- Class 1: 57 7/8"
- Class 2 & 3: 57 3/4"
- Class 4 & 5: 57 1/2"

Specifications

Weight	59 lbs
Length	66 inches
Width	4.75 inches
Height	9 inches



For a complete list of specifications and additional tools, contact Racine Railroad Products, Inc. at:
Tel (262) 637-9681 / email: custserv@racinerailroad.com
1955 Norwood Court Mount Pleasant, Wisconsin 53403

